



**'The Well House'
Littlefield Green**

■ AUCTIONEERS ■
SURVEYORS **PIKE & SMITH KEMP** VALUERS ■
■ ESTATE AGENTS ■

**The Well House, Littlefield Green
White Waltham
Maidenhead, Berkshire, SL6 3JL**

“A beautiful period family home set in a semi-rural hamlet”

A handsome period house of fine proportions and an elegant interior at the end of a no through lane set in delightful mature secluded gardens approaching half an acre with a south westerly rear aspect. Littlefield Green is a semi-rural hamlet between the villages of white Waltham and Paley Street within easy reach of the shopping and leisure facilities that may be found at Windsor and Maidenhead.

The property is in a sought after location within easy reach of central Maidenhead with its extensive range of shops, cafes, restaurants and leisure facilities. Transport links are excellent, there is a mainline station into London Paddington and central London, serviced by the Elizabeth Line with both the M4 and M40 motorways close by. Local state and private schools are highly regarded

EPC Rating: TBC
Council Tax band: G

PRICE: £1,195,000 FREEHOLD



Pike Smith & Kemp
22 Queen Street, Maidenhead
Berkshire SL7 1HZ

maidenhead@pikesmithkemp.co.uk
01628 621177

Accommodation summary

ENTRANCE HALL

DRAWING ROOM

SITTING ROOM

KITCHEN/BREAKFAST ROOM

DINING ROOM

CLOAKROOM

First floor

PRINCIPAL BEDROOM

BEDROOM TWO WITH EN-SUITE AND DRESSING ROOM

THREE FURTHER BEDROOMS

FAMILY BATHROOM

Outside

GARAGE/WORKSHOP/UTILITY

OFF STREET PARKING

APPROX. 0.5 ACRES SOUTH WEST FACING MATURE GARDENS

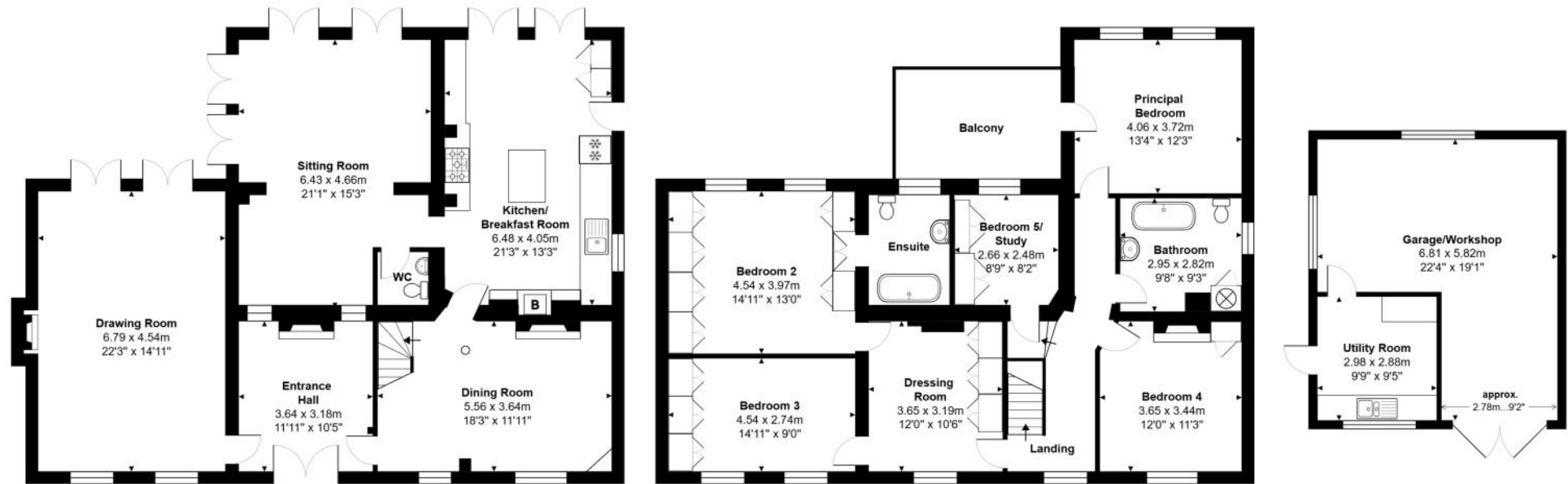




Littlefield Green, White Waltham, Maidenhead, SL6 3JL

Approx. Total Area: 237.2 m² ... 2553 ft² (excluding balcony, garage/workshop, utility room)

Garage/Workshop and Utility Approx. Area: 39.6m² ... 427 ft²



Whilst every attempt has been made to ensure the accuracy of the floorplans contained here, measurements of doors, windows and rooms are approximate and no responsibility is taken for any error, omission or mis-statement. These plans are for representation purposes only.









Directions: From the rear of Maidenhead Station proceed up Shoppenhangers Road passing over the motorway and after a further half a mile bear left at the mini roundabout onto Woodlands Park Road. Continue to the end of this road and at the mini roundabout turn left onto Waltrham Road (signposted White Waltham) passing the airfield on the right then after circa three quarters of a mile turn left into Church Hill (signposted Paley Street and Windsor). At the top of Church Hill turn left and after about a quarter of a mile take the next left into the no through road where The Well House is the last property on the right.

