



23 Riverine
Maidenhead

£400,000 Share of Freehold

23 Riverine, Grosvenor Drive
Maidenhead, Berkshire SL6 8PF

Price £400,000 Share of Freehold

'A spacious two bedroom apartment with uninterrupted river views'

A well proportioned stylish first floor apartment with lift on a prestigious riverside development with residents' heated swimming pool, garage and parking. Riverine is located approximately 1 mile from the town centre and is well placed for local amenities, transport links and is being sold with the benefit of a share of the freehold.

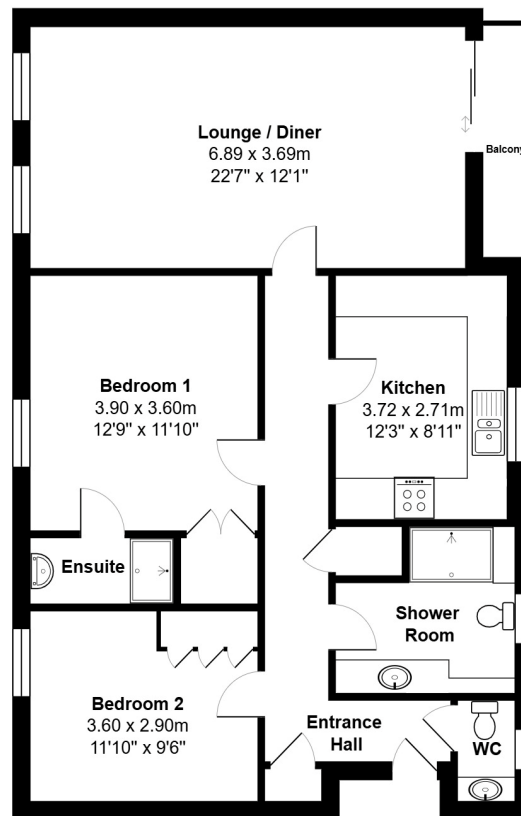
**Entrance Hall: Cloakroom: Bedroom one with en-suite Shower room: Bedroom two: Kitchen: Lounge/
Dining room: Shower room: Balcony: Parking: Garage: Off Street parking**

The M4 and M40 motorway are easily accessible providing access to Heathrow and Central London. Rail services to London Paddington are available from Maidenhead Station with an excellent service to London Paddington and directly into the city centre via the Elizabeth Line.

EPC Rating: C Council Tax Band : E
Charges: Maintenance approx. £365/month, incl. building insurance

Riverine, Grosvenor Drive, Maidenhead, SL6 8PF

Approx. Total Area: 85.9 m² ... 925 ft² (excluding balcony)



Whilst every attempt has been made to ensure the accuracy of the floorplans contained here, measurements of doors, windows and rooms are approximate and no responsibility is taken for any error, omission or mis-statement. These plans are for representation purposes only.





PIKE SMITH & KEMP

22 QUEEN STREET, MAIDENHEAD, BERKSHIRE SL6 1HZ

MAIDENHEAD@PIKESMITHKEMP.CO.UK

www.pskweb.co.uk

01628 621177