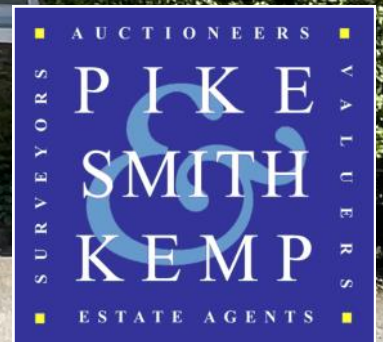




2 Elm Cottages



2 Elm Cottages Holyport Street Berkshire, SL6 2JU

‘ A beautiful 2 bedroom cottage in Holyport village ’

A charming cottage located in one of the villages most sort-after lanes. The property has been the subject of a comprehensive 'no expense spared' refurbishment in 2021. The property now offers stylish contemporary accommodation with high-end fittings yet retaining some key original features. There are two double bedroom suites with bath/shower rooms, a 22ft living room. The cosy living room has a wood burning stove fitted in 2022. The show-piece of the property is the vaulted ceiling kitchen with roof lights and the high quality Häcker fitted kitchen. Appliances include a Samsung American-style fridge-freezer, five ring induction hob with pan drawers under, oven and combined oven and microwave, fully integrated dishwasher and cupboard over housing a new Vaillant combination boiler installed May '24. Main bedroom suite with cast iron fire place and double fitted wardrobes either side shuttered window to the front and dressing area with wardrobe. Shower room with a floating vanitory unit with twin bowl basins sitting on top with gold fittings and hexagonal half wall tiling and complementary gold heated towel rail. Glass door opening to a double size shower, wall mounted WC with enclosed cistern. Second bedroom with three roof lights and door to the ensuite bathroom. A white suite with contrasting black brassware and black and white patterned flooring. The rear garden has a paved seating area leading to a lawn and garden path and home office with dedicated power and light.

Council Tax Band: E EPC Rating: D

PRICE: £700,000 FREEHOLD



Pike Smith & Kemp
22 Queen Street, Maidenhead
Berkshire SL7 1HZ



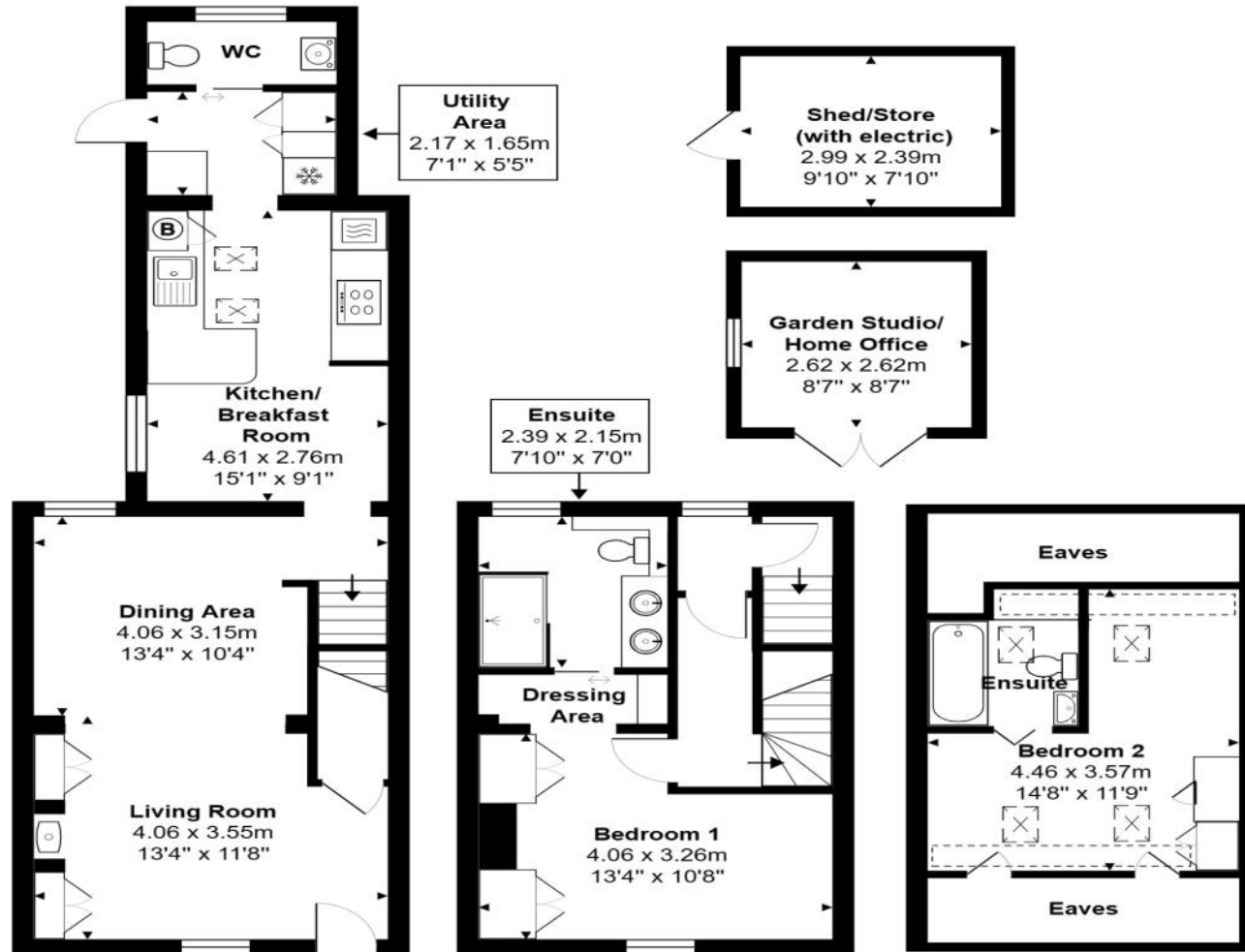
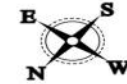
maidenhead@pikesmithkemp.co.uk





Elm Cottages, Holyport Street, Holyport, Maidenhead, SL6 2JU

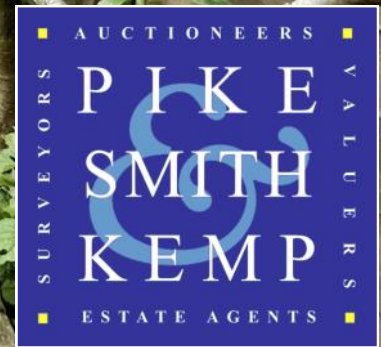
Approx. Total Area: 89.9 m² ... 967 ft² (excluding shed/store, garden studio/ home office, eaves)



Whilst every attempt has been made to ensure the accuracy of the floorplans contained here, measurements of doors, windows and rooms are approximate and no responsibility is taken for any error, omission or mis-statement. These plans are for representation purposes only.







Pike Smith & Kemp
22 Queen Street, Maidenhead
Berkshire SL7 1HZ
maidenhead@piksmithkemp.co.uk
01628 621177