



THE THATCH
LITTLEWICK GREEN

■ AUCTIONEERS ■
SURVEYORS ■ PIKE & SMITH ■ VALUERS ■
KEMP ■
■ ESTATE AGENTS ■

The Thatch, Jubilee Road Littlewick Green, Berkshire SL6 3QU

Offers invited in the region of £1,545,000 FREEHOLD

Location managers for Midsomer Murders discovered the quintessentially English village of Littlewick Green in 1998 and it has filmed here since, often featuring The Thatch. At the heart of this much sought-after village and next to the cricket pitch, this charming, wisteria-clad home, with roses round the door, offers generous accommodation.

There are three/four bedrooms, 2 bathrooms, two/three reception rooms and a large kitchen/breakfast room.

The large, cottage-style garden has been landscaped by the current owners over 34 years and is very secluded. In a large hollow is an indoor swimming pool, waterfall and wildlife pond. The flower beds are stocked with mature perennials, shrubs and feature trees—all planted to help wildlife. The private driveway leads to a tandem garage.

Much has also been done by the current owners to increase The Thatch's energy efficiency to the grid. There is double glazing throughout. The reed thatched roof was completely replaced in 2011.

The Thatch is conveniently located near Maidenhead and Marlow with their fine dining, shopping and leisure facilities. Transport links are excellent. The Elizabeth Line takes passengers from Maidenhead to Paddington and the centre of London in 45 minutes. The M4 and M40 are close-by. Local state and private schools are highly-regarded. The property is also just 200 yards from the village Montessori school. The popular village pub The Cricketers is close by as is St John the Evangelist church.

EPC Rating: E Council Tax Band: G

Pike Smith & Kemp
22 Queen Street, Maidenhead
Berkshire SL7 1HZ

maidenhead@pikesmithkemp.co.uk
01628 621177



Accommodation summary

*Entrance Hall
Kitchen/Breakfast Room
Sitting Room
Dining Room
3/4 Bedrooms
Study/4th Bedroom
2 Bathrooms
Cloakroom*

*Well-established and enclosed Cottage Garden
of around 0.5 acre
Indoor Heated Swimming Pool
Double Garage*



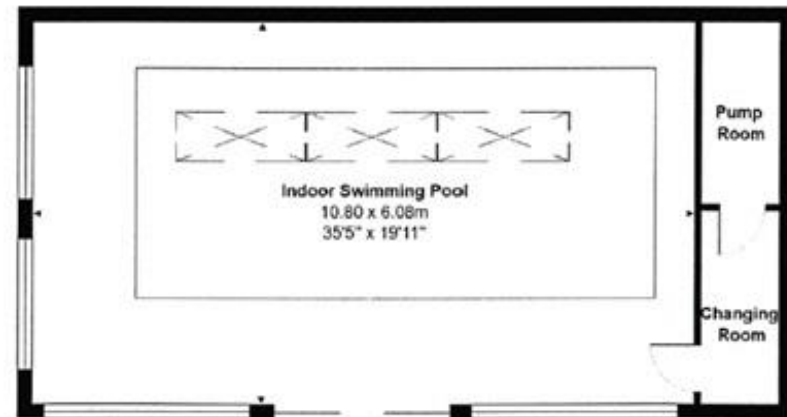
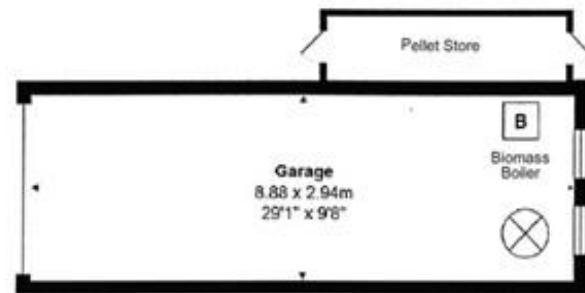
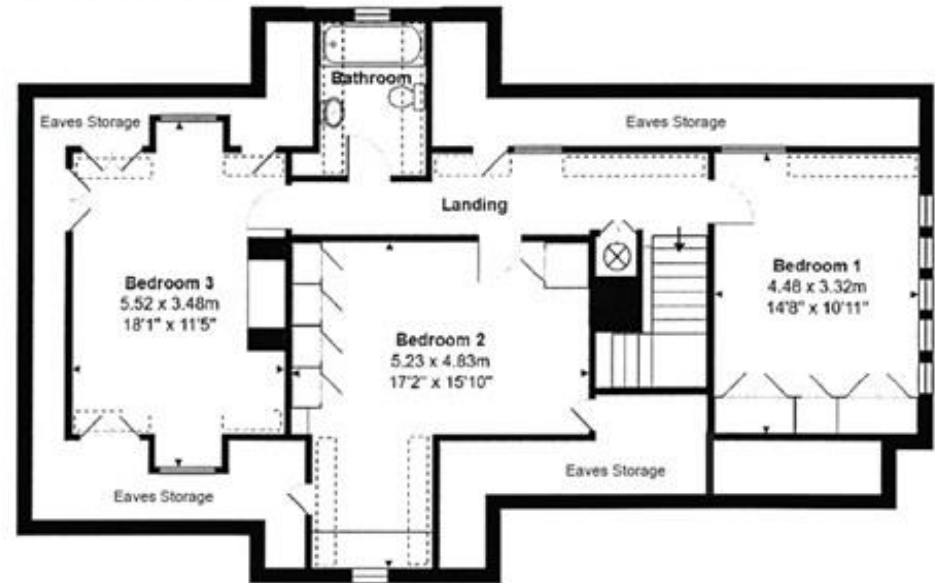


The Thatch, Jubilee Road, Littlewick Green, Maidenhead, SL6 3QU

Approx. Total Area: 204.3 m² ... 2199 ft² (excluding Indoor Swimming Pool building, Garage, Store)

Garage and Store: 30.80 m² ... 333 ft²

Swimming Pool Building: 74.20 m² ... 798 ft²



Whilst every attempt has been made to ensure the accuracy of the floorplans contained here, measurements of doors, windows and rooms are approximate and no responsibility is taken for any error, omission or mis-statement. These plans are for representation purposes only.





